

Rib Cage and Pelvis

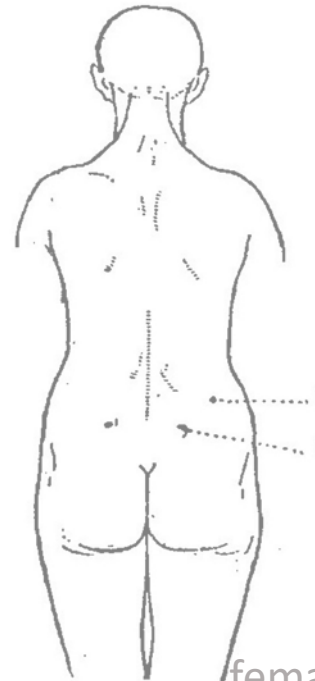
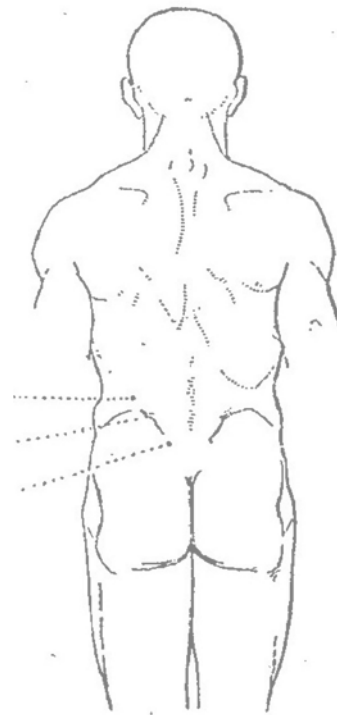


Relational aspects of Ribcage to Pelvis

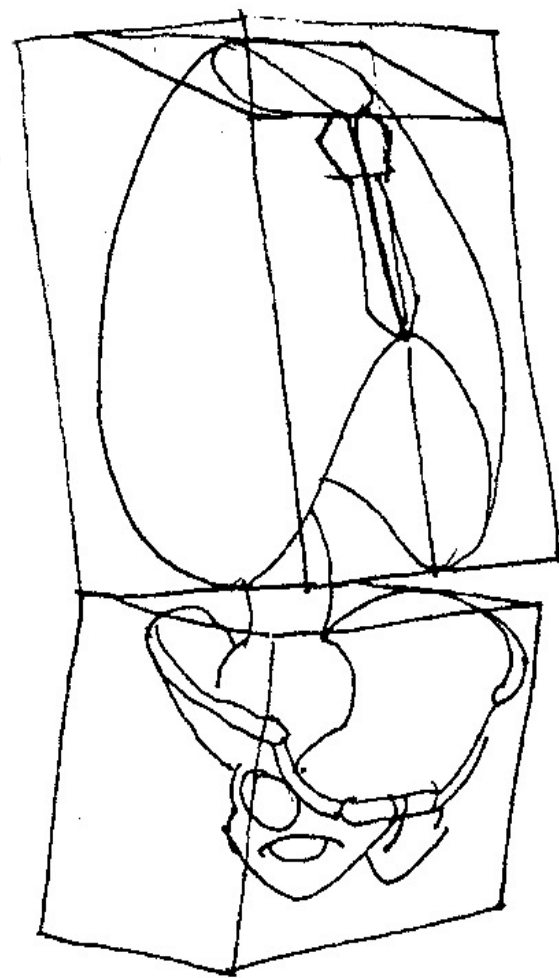
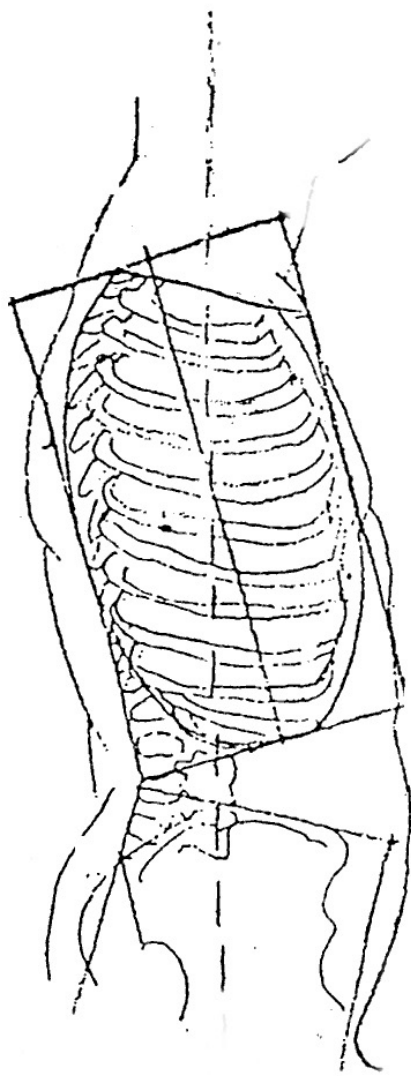
- Width of the male ribcage tends to be the same as the male pelvis.

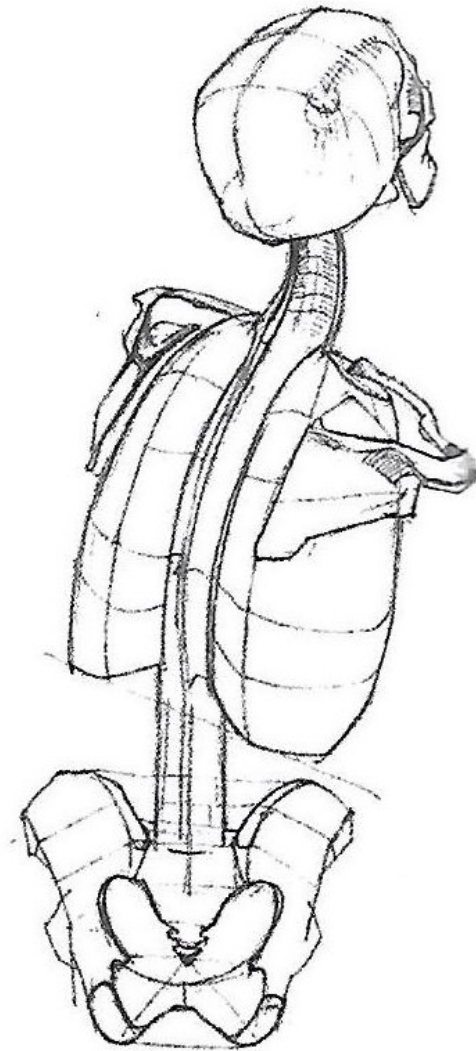
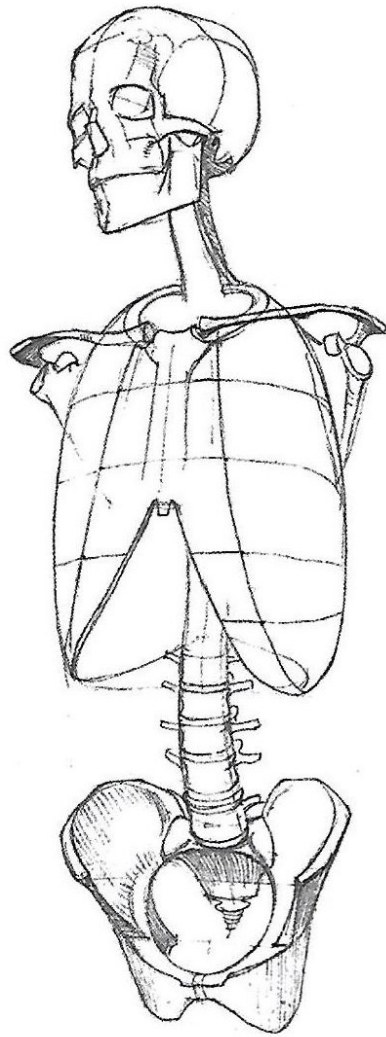


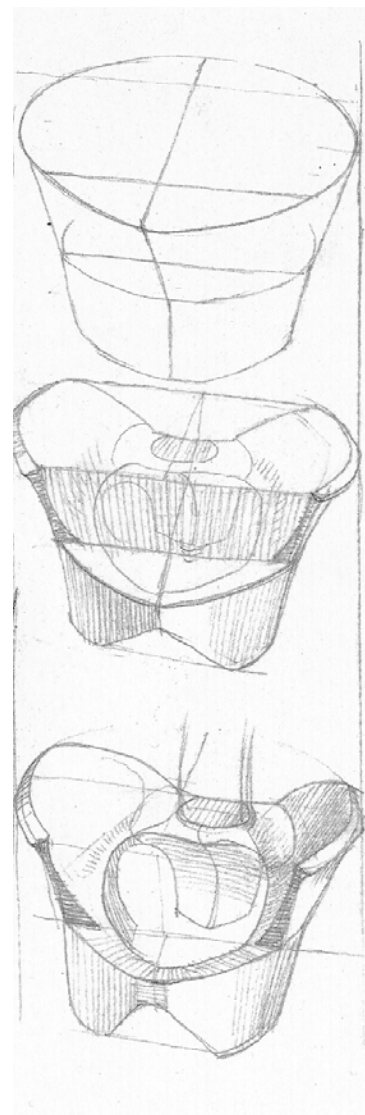
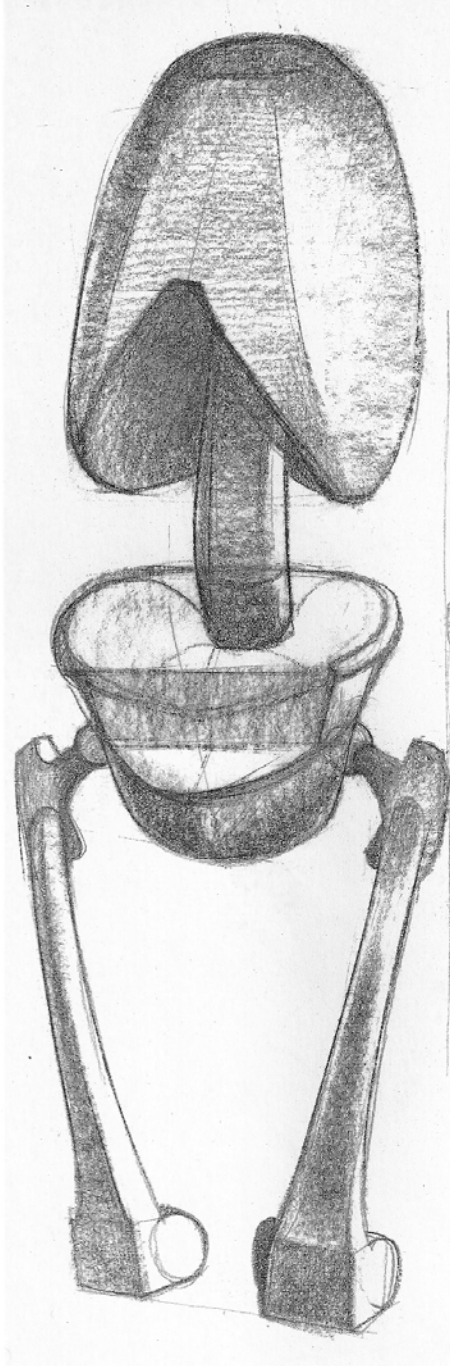
male



female







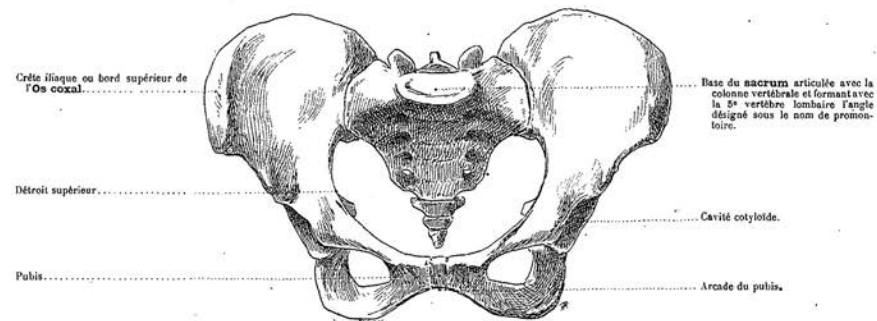


FIG. 1. — PLAN ANTÉRIEUR.

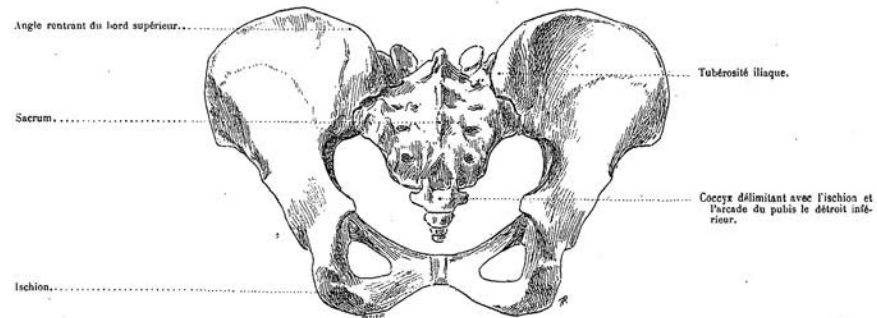


FIG. 2. — PLAN POSTÉRIEUR.



FIG. 3. — PLAN LATÉRAL.

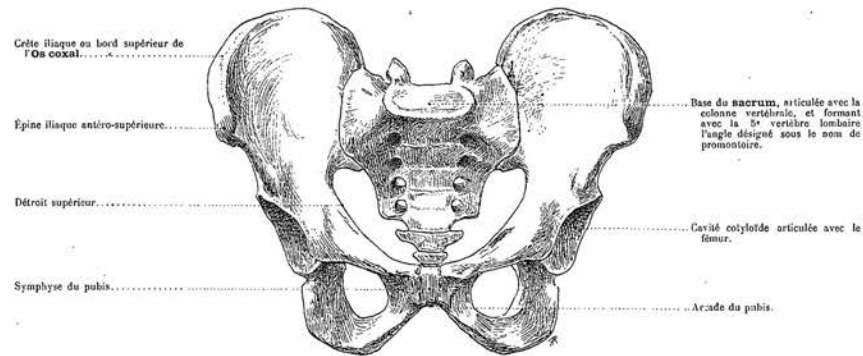


FIG. 1. — PLAN ANTÉRIEUR.

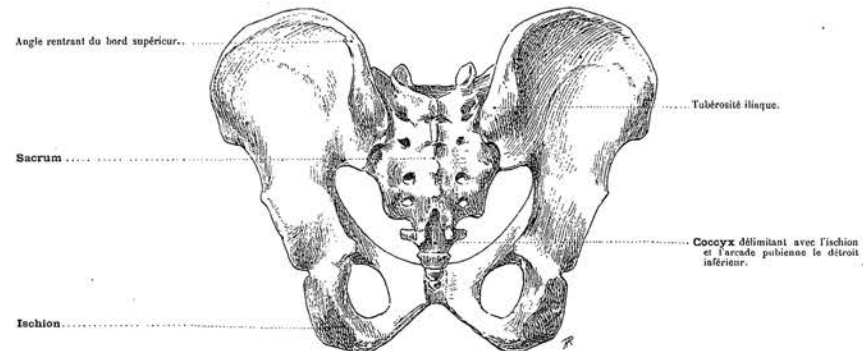


FIG. 2. — PLAN POSTÉRIEUR.

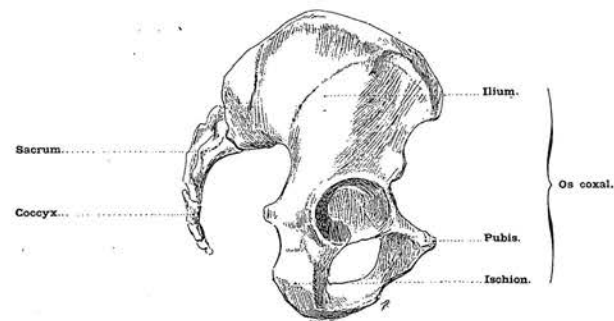
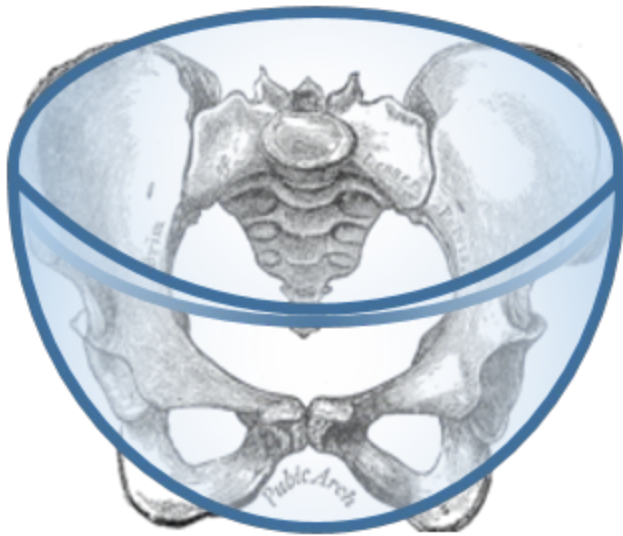
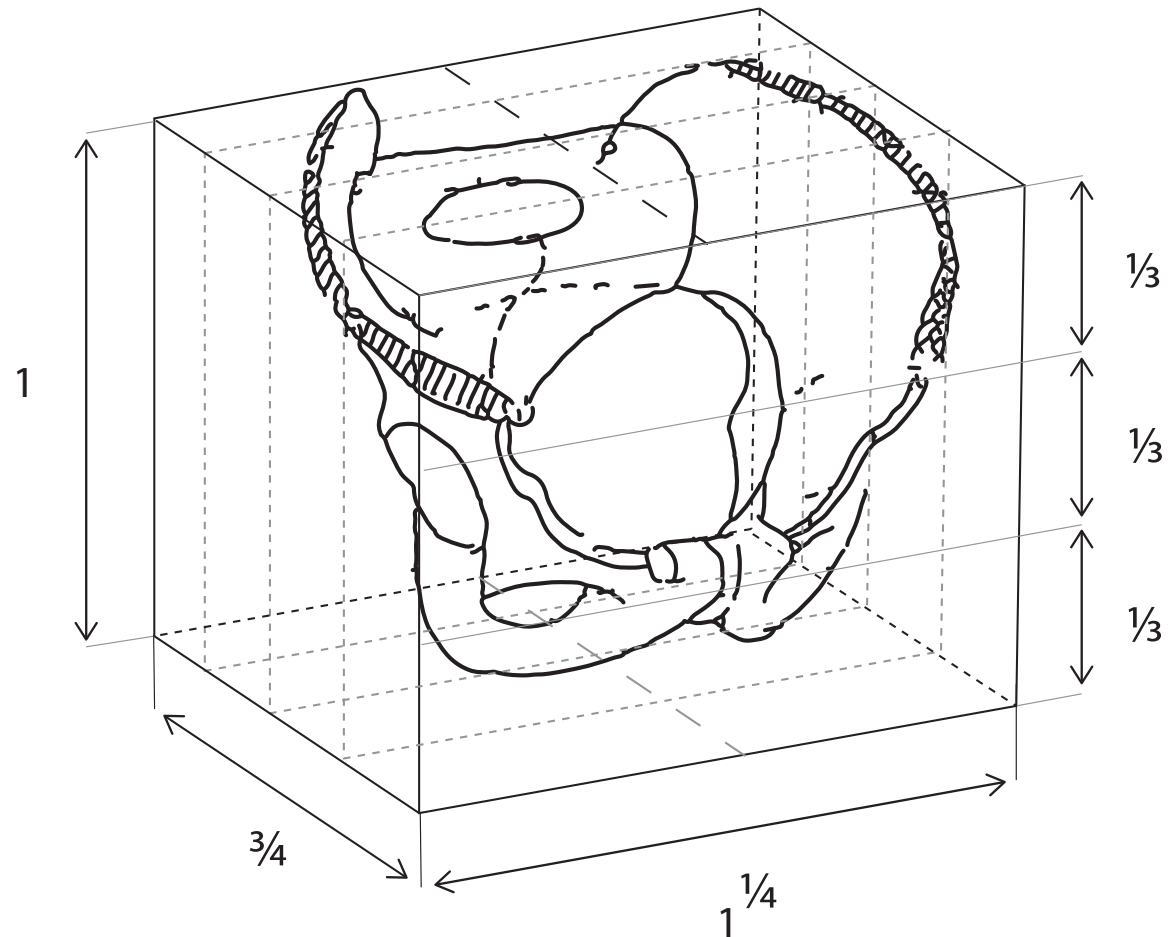


FIG. 3. — PLAN LATÉRAL.



Schematic of Iliac Crest and Pelvis



Aerial View, a schematic iliac crest of pelvis

- 1/4 UP & OUT

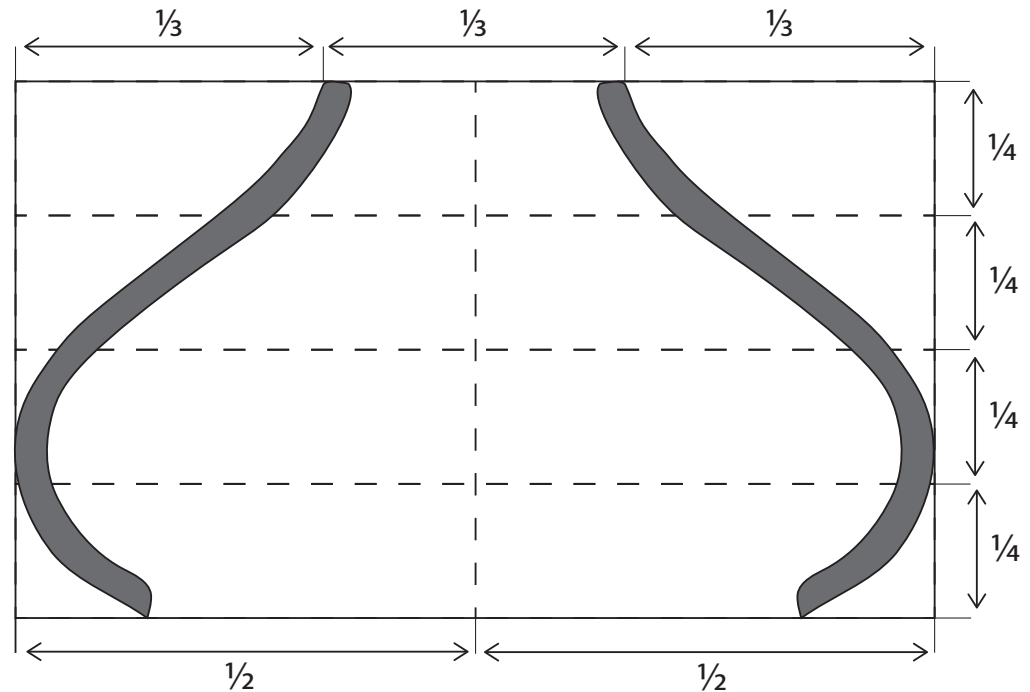
Concave (convex inward) to the back plane

- 1/2 UP & IN

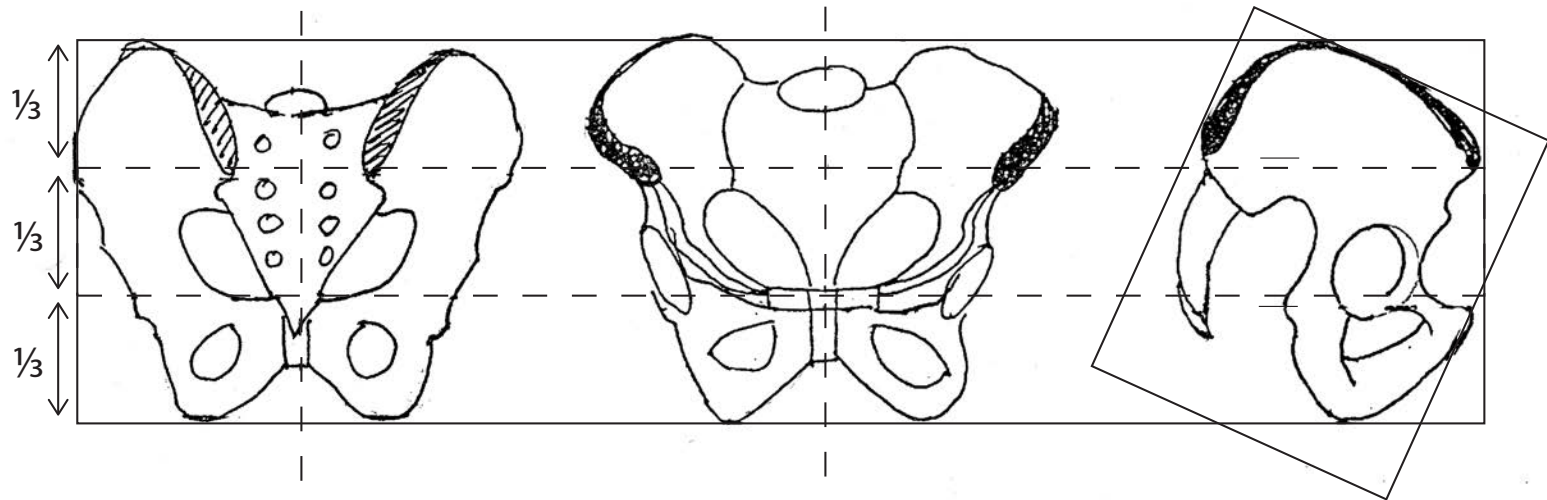
Convex outward to highest part

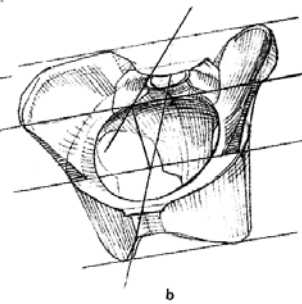
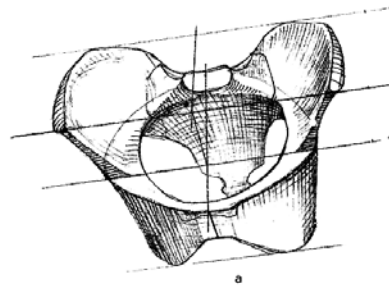
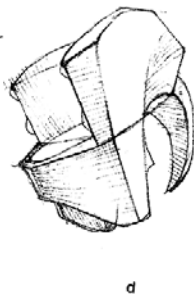
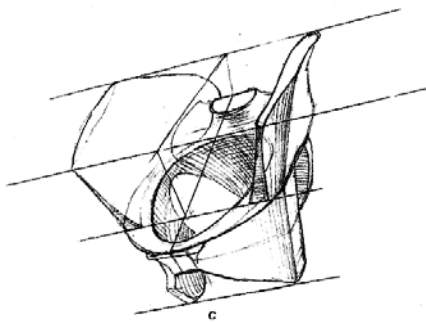
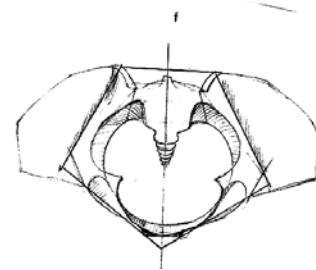
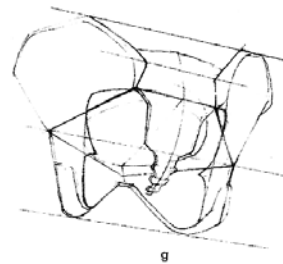
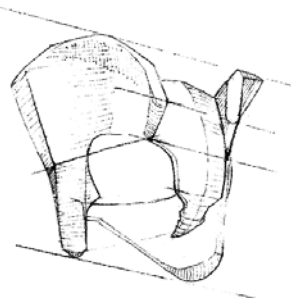
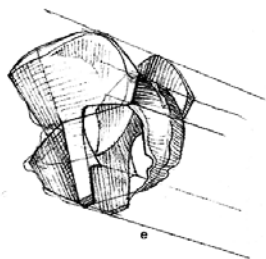
- 1/4 UP & OUT

Convex outward to widest part



Iliac Crest and Pelvis in thirds





CAGE THORACIQUE (SUITE)

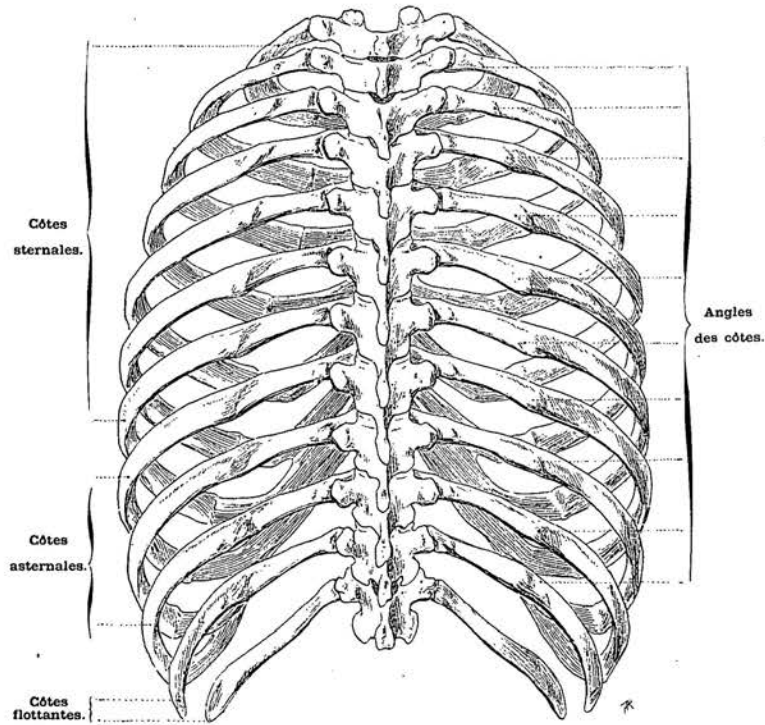


FIG. 4. — PLAN POSTÉRIEUR.

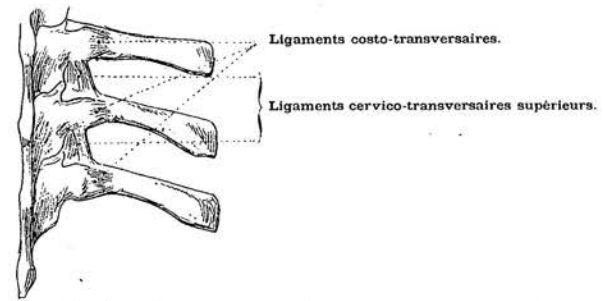


FIG. 2. — ARTICULATIONS DES CÔTES AVEC LA COLONNE VERTÉBRALE.
PLAN POSTÉRIEUR.

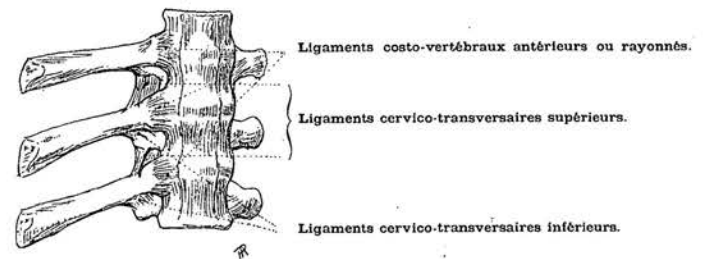


FIG. 3. — ARTICULATIONS DES CÔTES AVEC LA COLONNE VERTÉBRALE.
PLAN ANTÉRIEUR.

CAGE THORACIQUE

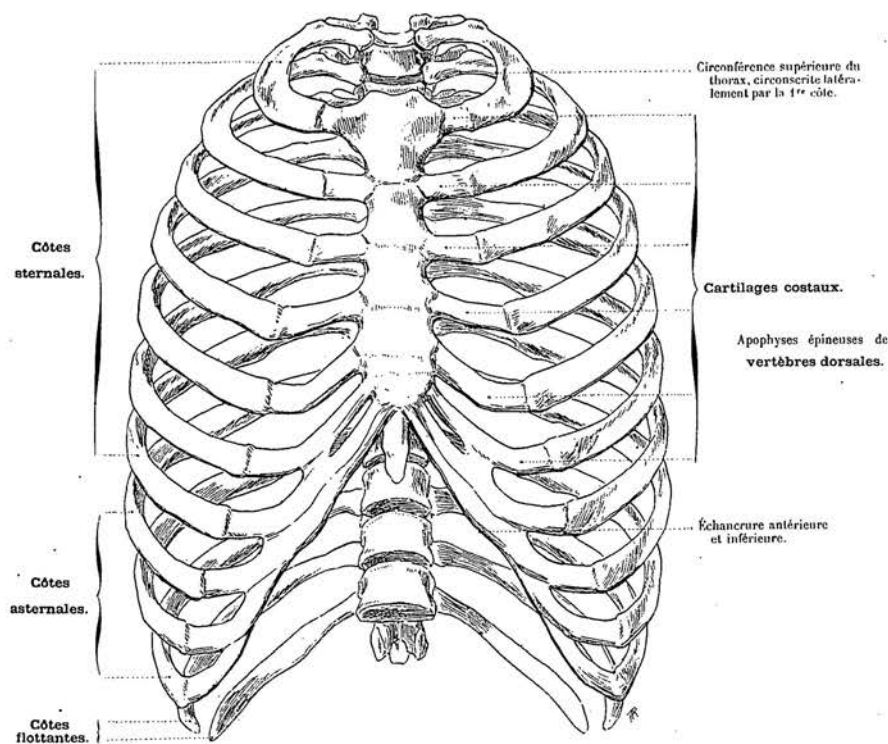


FIG. 1. — PLAN ANTÉRIEUR.

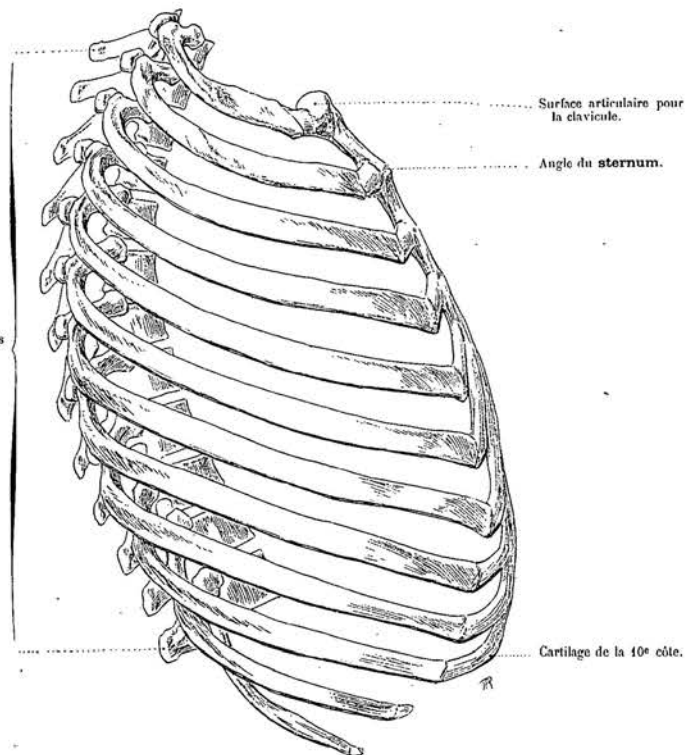


FIG. 2. — PLAN LATÉRAL.

Schematic of Rib Cage

