

ated

n (palm

est parallel
 es in the
 radius

er of
 e same
 rm as in b,
 nd turned
 ation of the
 increased
 of the
 joint.

ir zeichnen

a

b

c



a



b

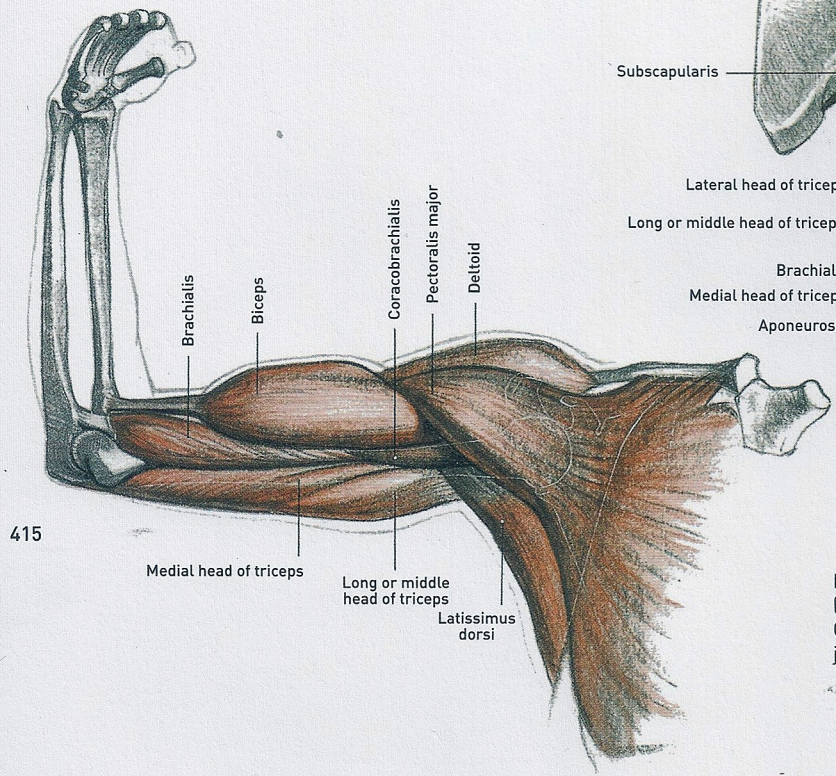
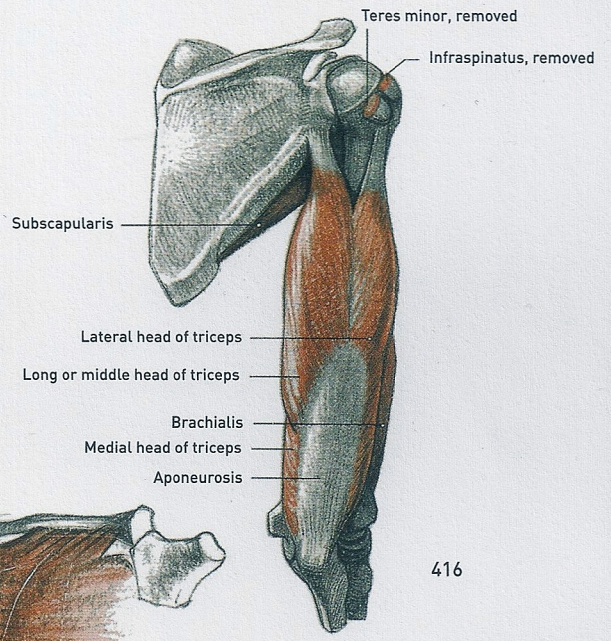
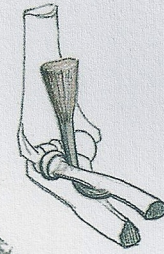
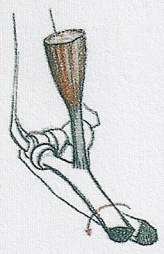
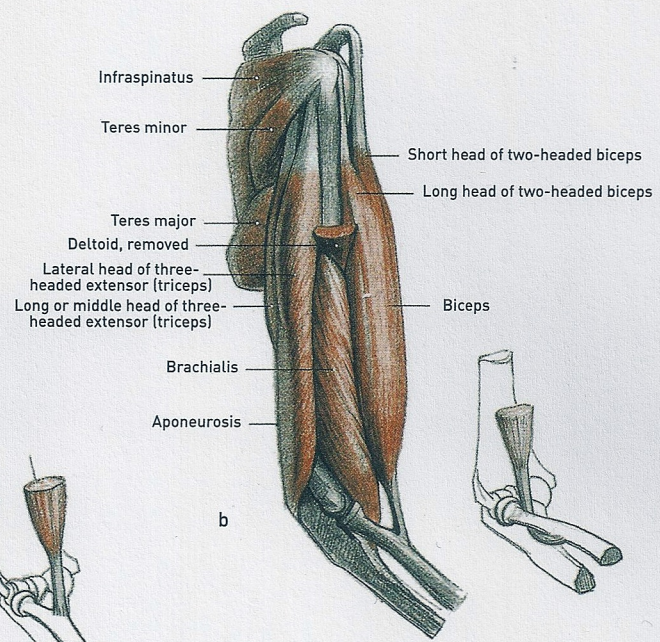
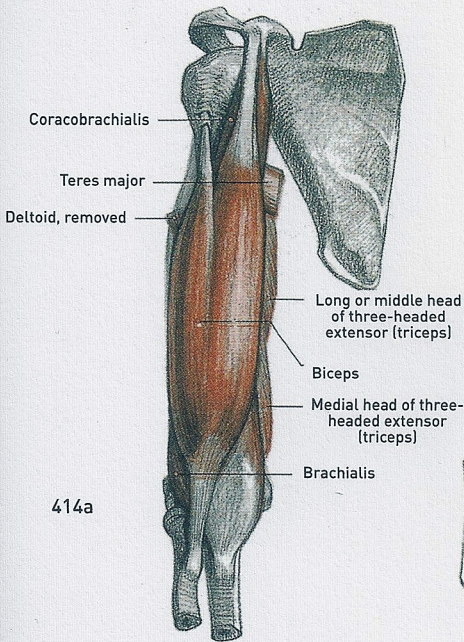
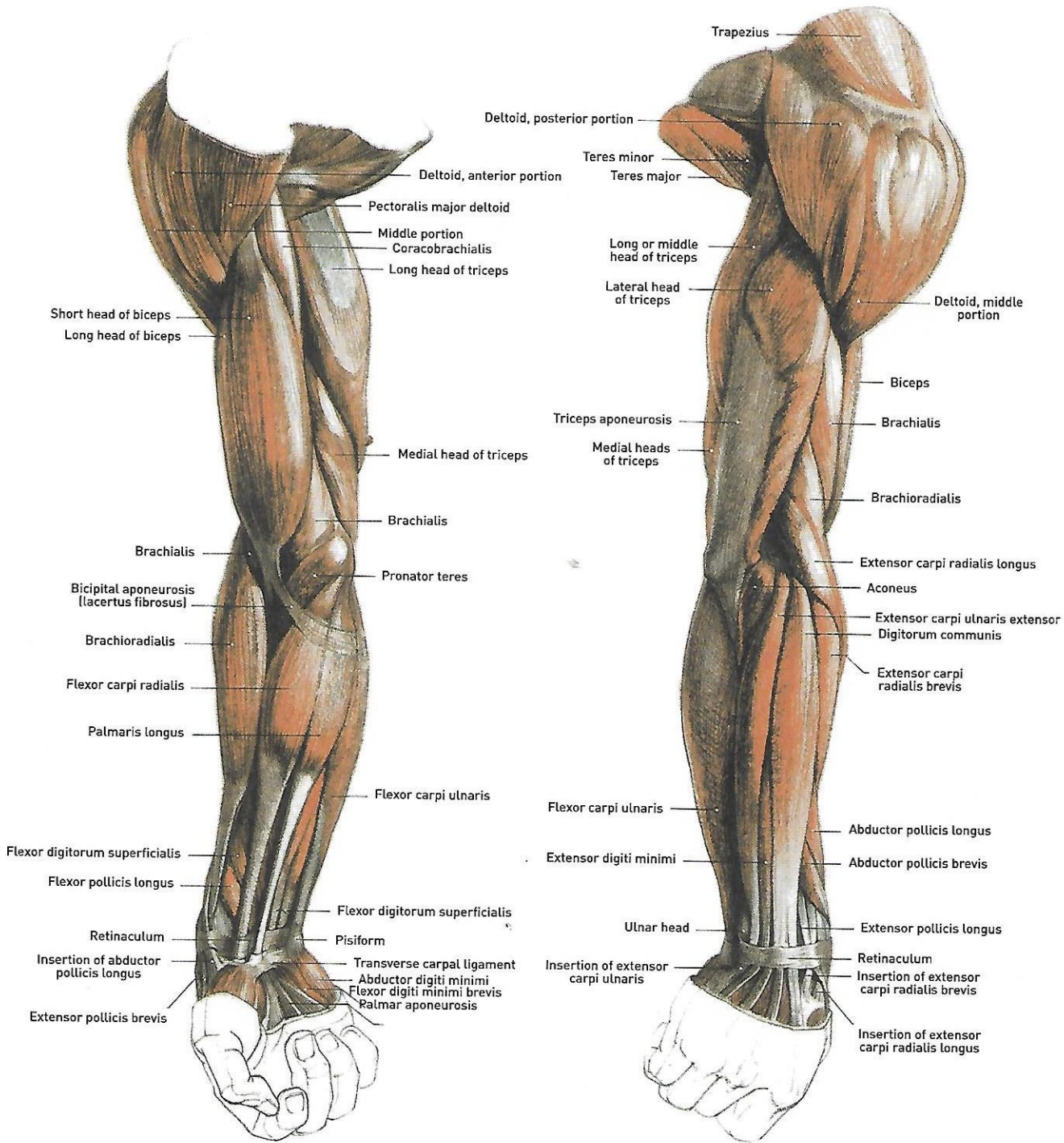


Fig. 416 (above) The extensors of the arm (posterior view). Only one single muscle extends the elbow joint, but this is split into three heads.



a

b

