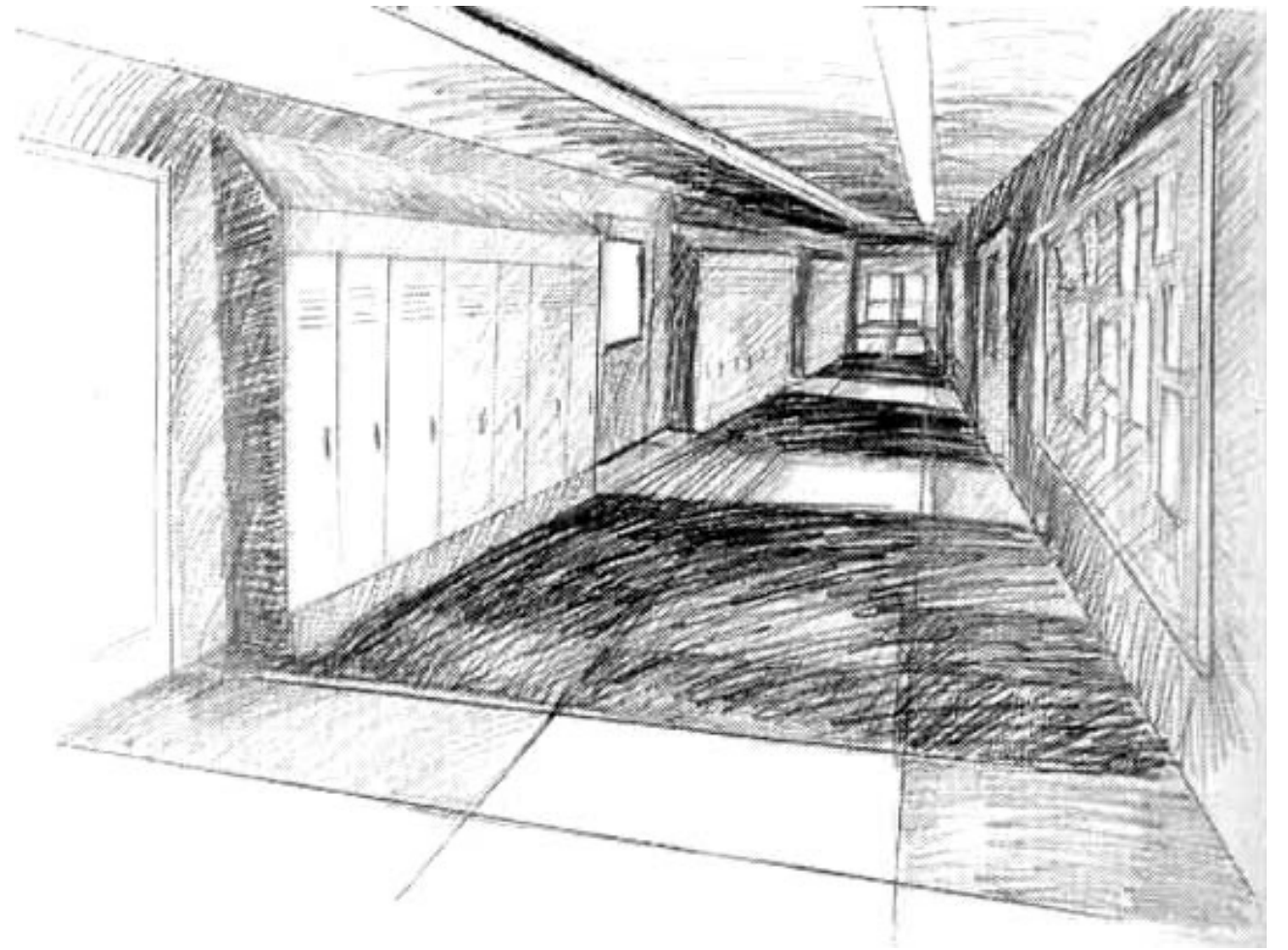


Perspective Assignment - Hallway Drawing

Professor Melanie Vote

- Requirements:



-
- Draw a 9 x 12 in one-point linear perspective **sketch** of a location within the ART DEPARTMENT with as much accuracy as possible.

You must use the following guidelines:

- A horizon line,
- Vanishing point
- Converging lines

Upon approval and proof of understanding, you then may move to your final.

NEXT

- Draw a final one-point perspective drawing (18 x 24) of a location within the school with as much detail and accuracy as possible. First start with line, value is optional.
- Remember the following : horizon line, vanishing point, and converging lines.

Have good "craft", meaning take good care of your drawing by avoiding folds, tears, stains, smudges, etc.

9 am:

Sketch the Hallways –

Warm-up/Thumbnail Sketch...



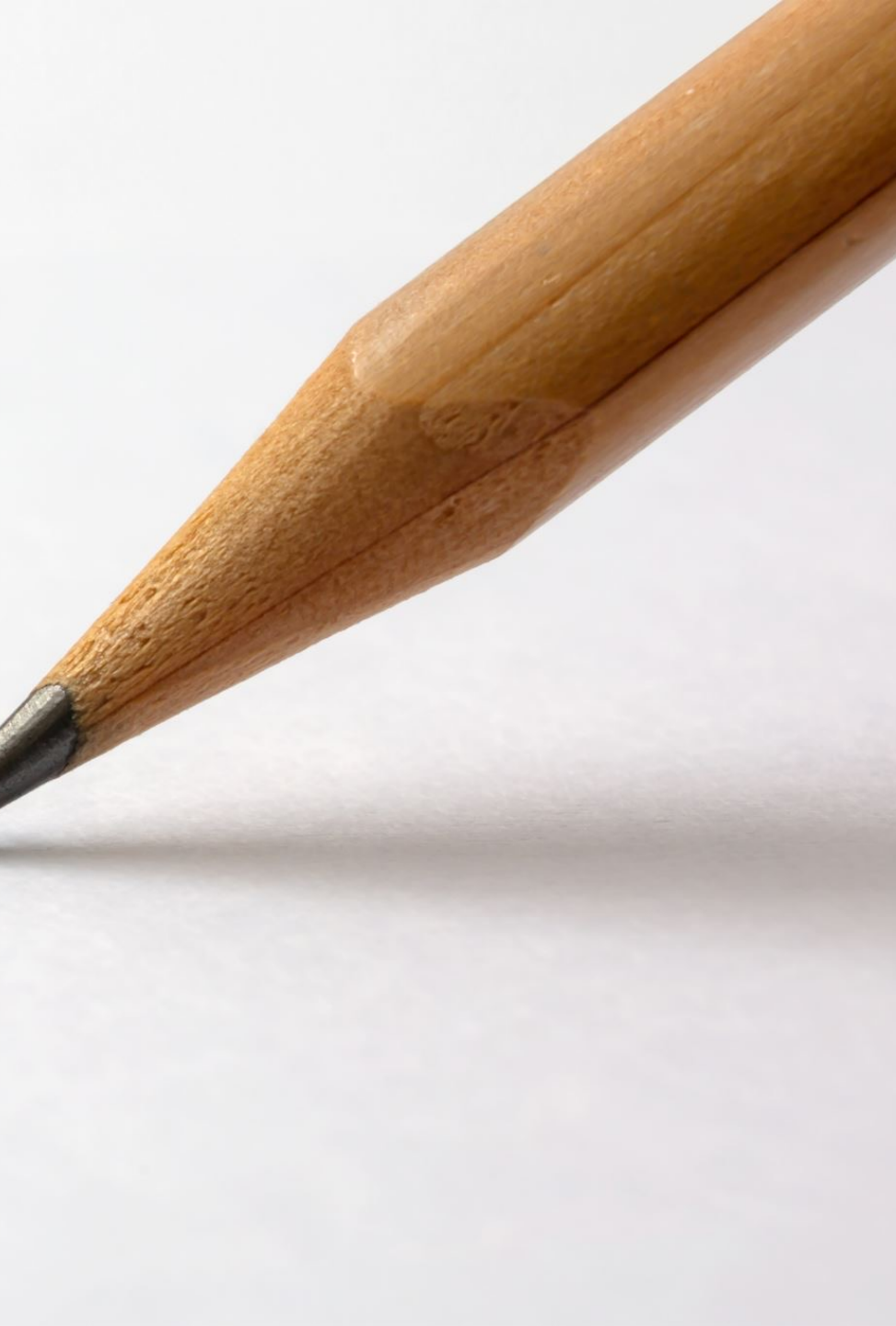
Step 1: Get your paper, pencil, eraser, drawing surface, and RULER

Step 2: Find a location with a ONE-POINT PERSPECTIVE. If you are unsure – ask!

Step 3: Get comfortable and place your HORIZON LINE somewhere near the middle of your page and find your vanishing point on that horizon line. Commit to This!!

Your Horizon Line and Vanishing Point should remain stationary for your whole drawing... It is your “foundation”.

Step 4: Begin drawing your hallway. You may start with the floor or ceiling or even the lockers...



Materials

-Paper

-Pencil (2H – HB to start)

-Eraser

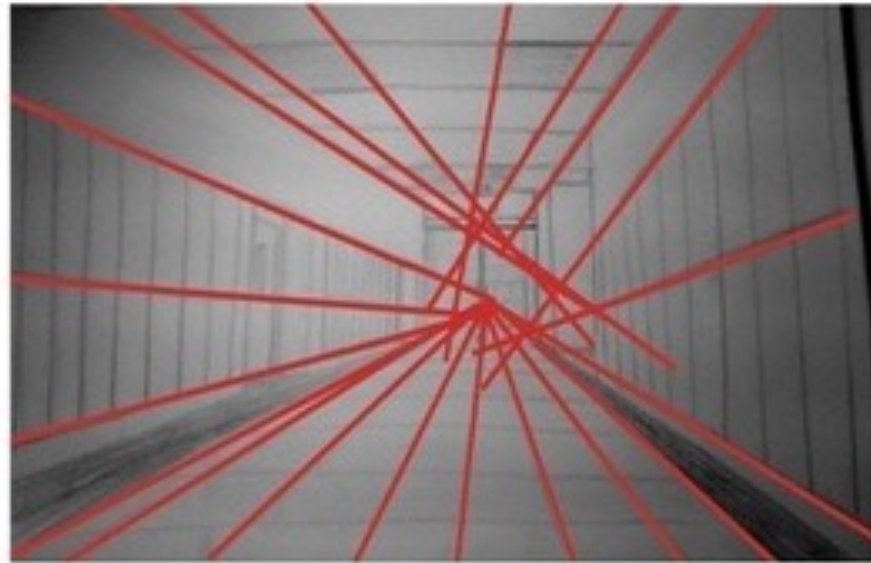
-Ruler & Skewer

-Drawing Board and Table Easel

Students Will

- Take items to a spot & draw.
- Make sure it is a location with (at minimum) one-point perspective.
- Remain focused and productive in the halls

BEWARE OF THIS.....

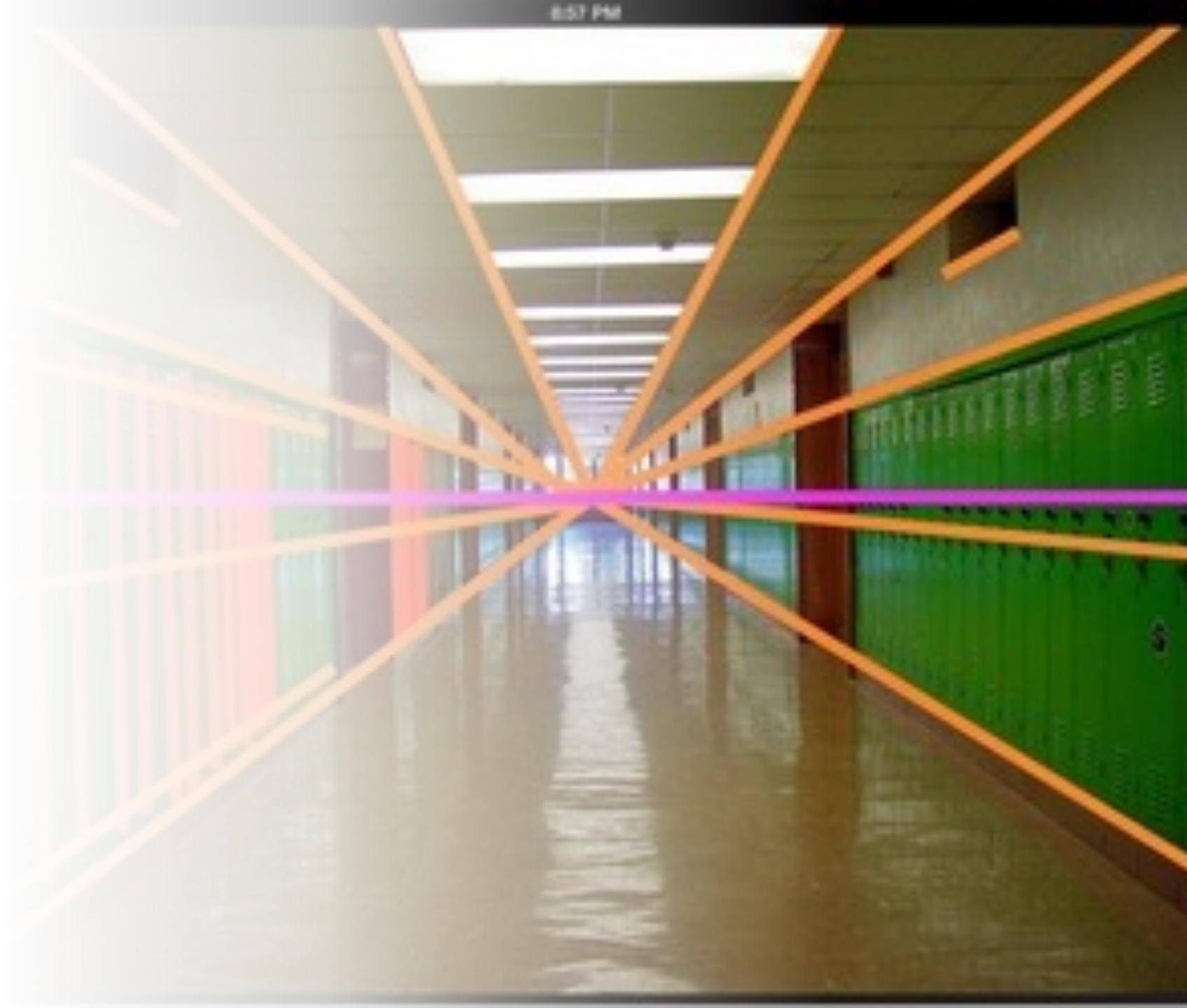




Hallway Examples

Keep your eye on
the...

- VANISHING POINT



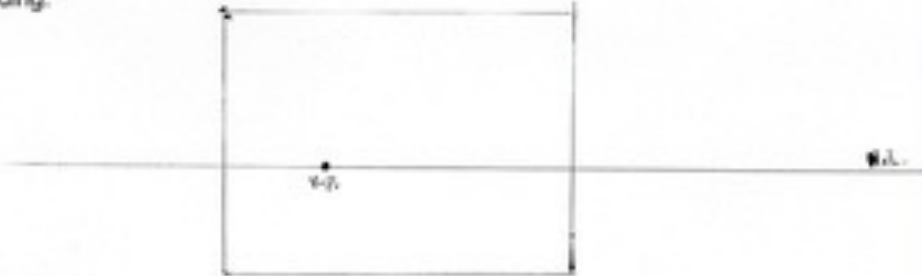
2 of 31

Step: 2

Draw your HORIZON LINE, and place your VANISHING POINT on the horizon line and within the box!

Your horizon line should be around your eye level.

Your vanishing point should be where you are sitting/standing.




The diagram shows a rectangle with a horizontal line passing through its center. A vanishing point is marked on the right side of the horizontal line. The vanishing point is labeled 'V.P.' and is positioned to the right of the rectangle's right edge. The horizontal line extends to the right of the rectangle, ending at the vanishing point.

Step 1: Draw the end of the hallway near the center of your paper...

The smaller the box, the further away you will seem from the end...and the perspective will be more drastic!

The bigger the box, the closer you will seem from the end of the hallway...and the perspective will be fairly flat.



The diagram shows a rectangle representing the end of a hallway. The rectangle is positioned in the center of the page. The top and bottom edges of the rectangle are horizontal, and the left and right edges are vertical. The rectangle is drawn with a perspective that makes it look like the end of a hallway.



