

Master Analysis

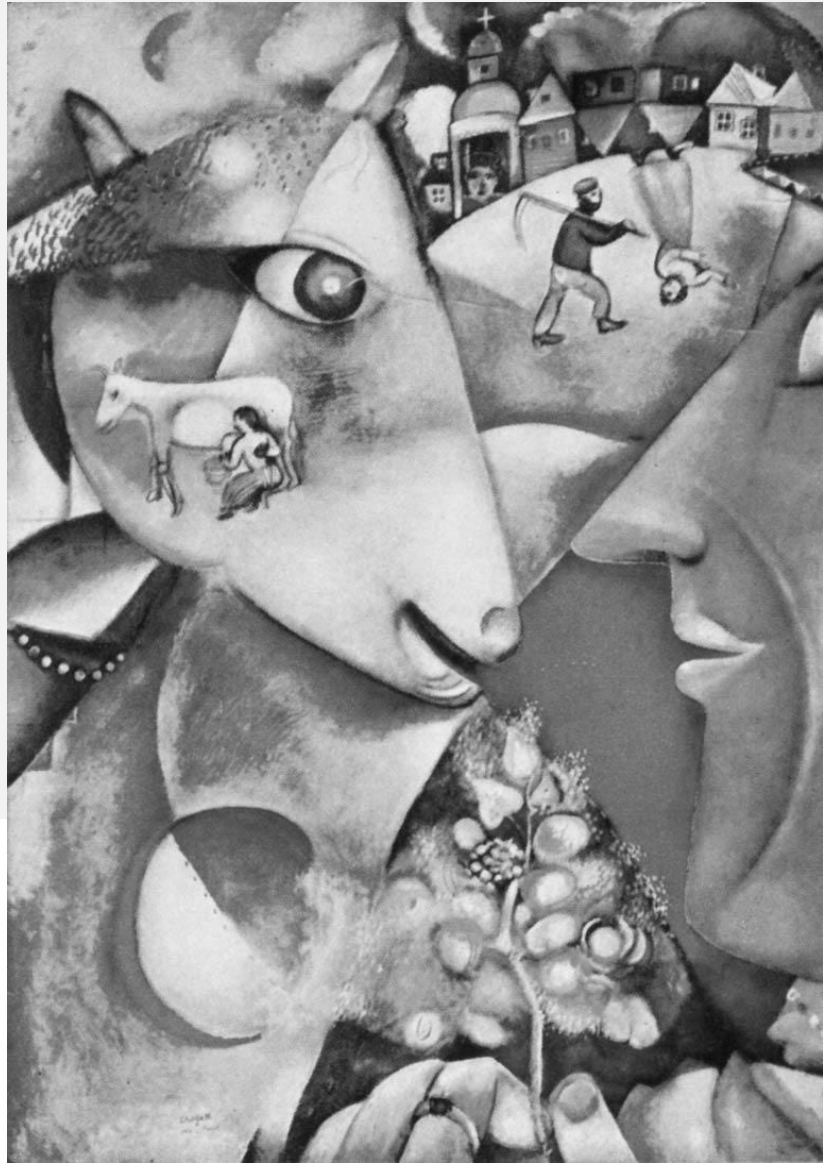
Compositional Study and Creation of a New Drawing



STEP I

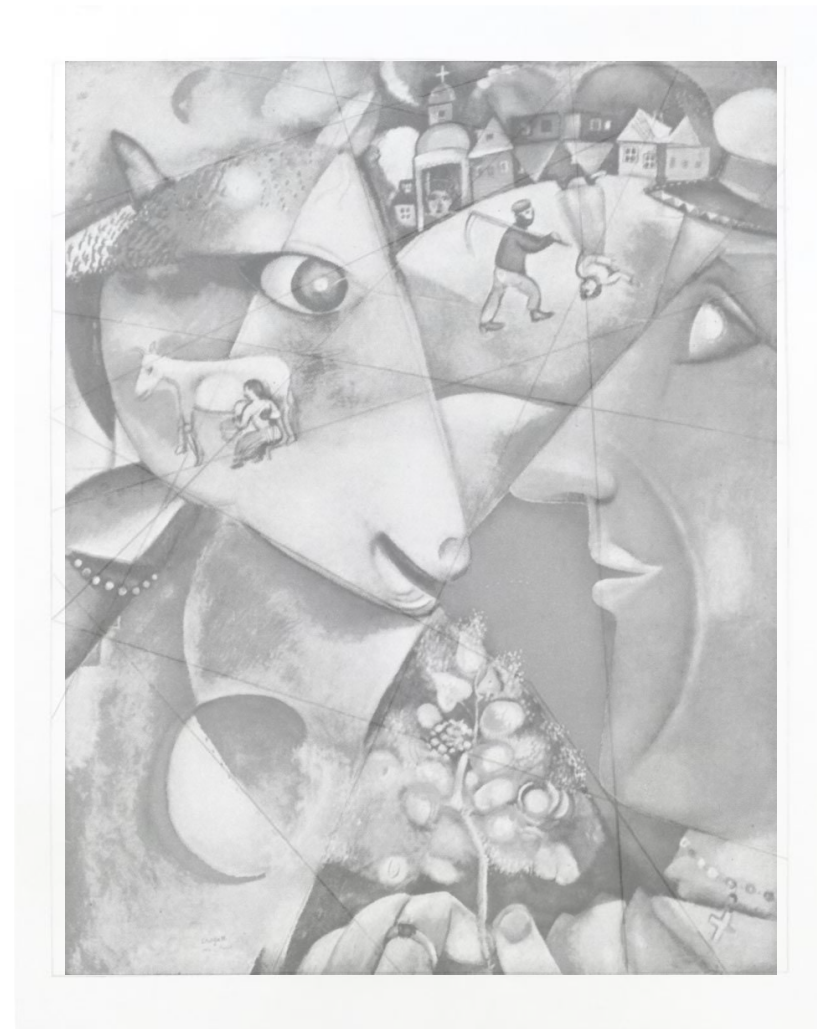
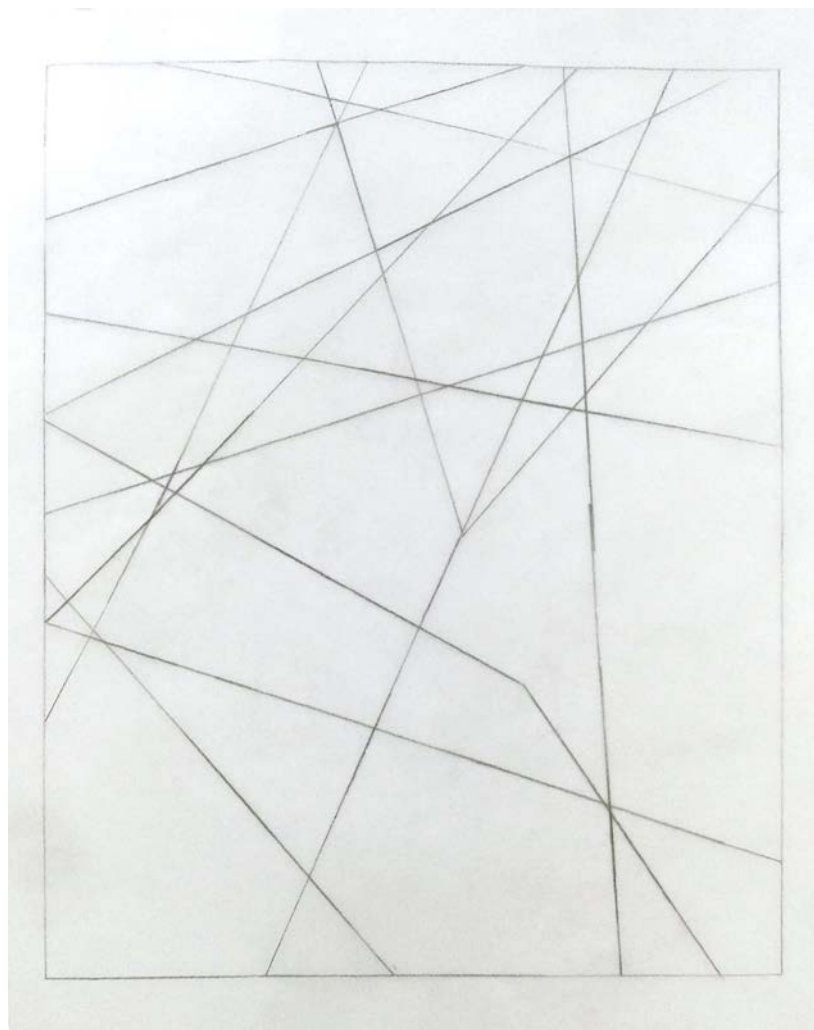
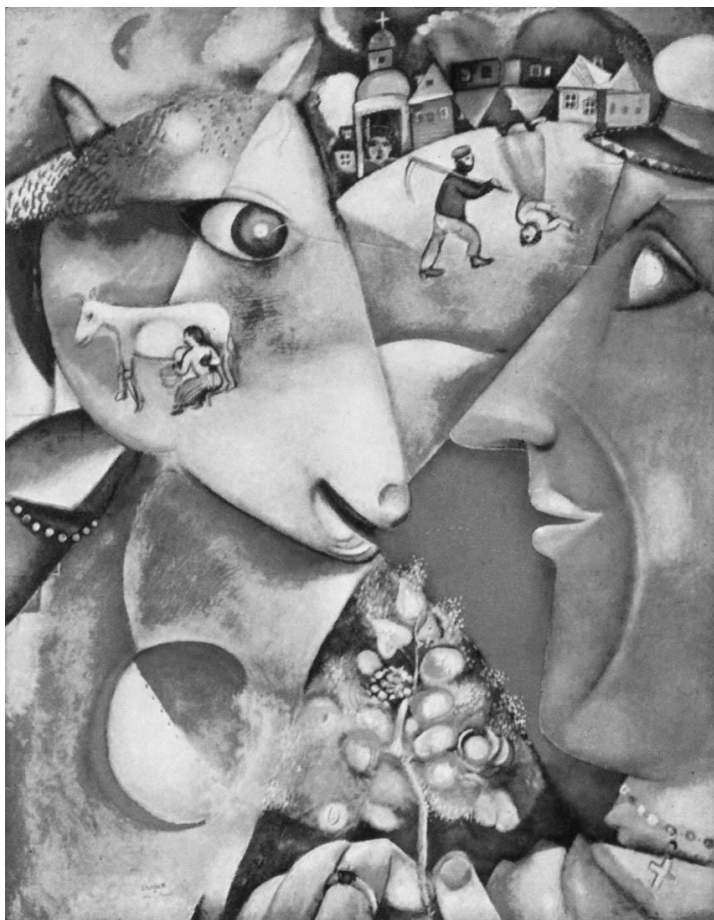
- Identify an artwork to study
- Desaturate this image



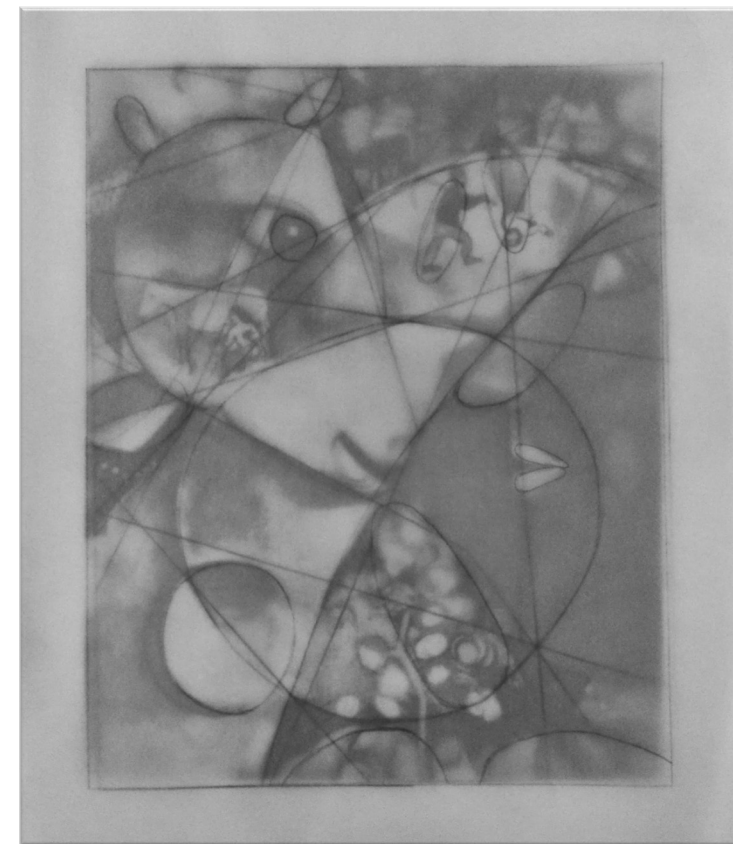
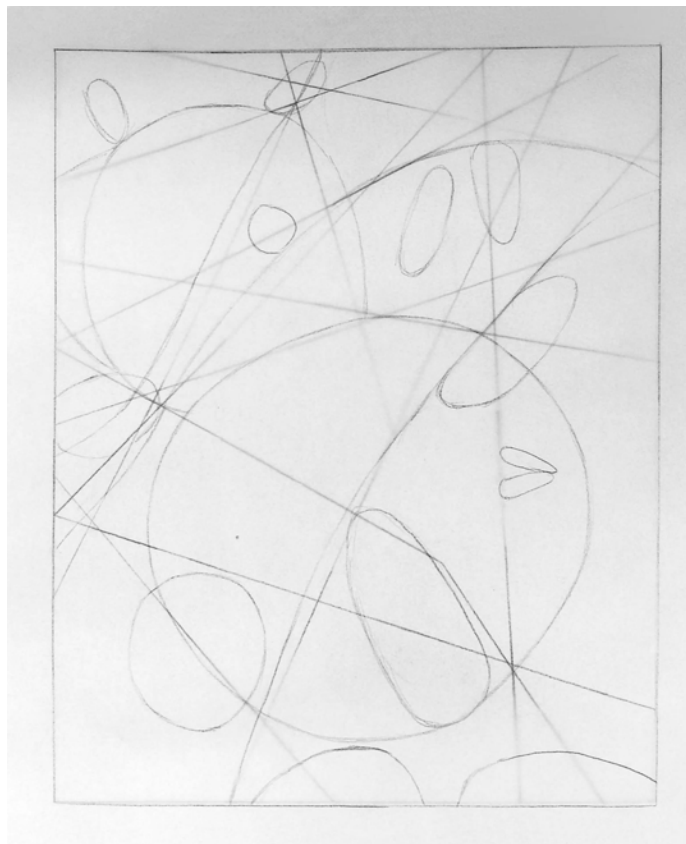


Lets Look at
Chagal

Break Down and Find Straight Lines



Then Find Ellipses and Circles

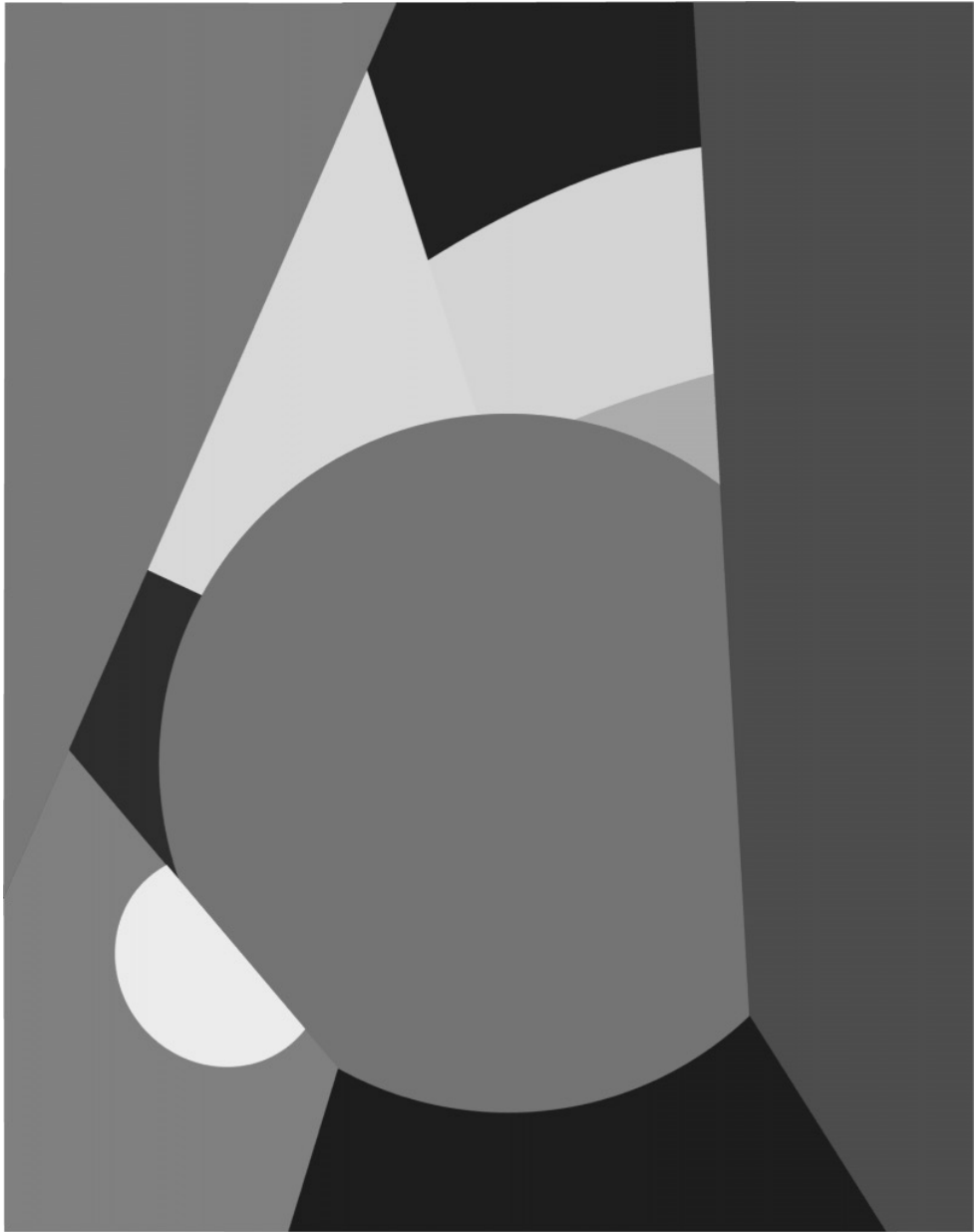




Make Shape and Value Assessments

- Based on the Maser Piece
- Decide where the shapes will break down (simplify)
- Decide how dark or light an area in your new compositions

From Here,
Redraw your
new piece
using...



Enlarge the Simple Shapes to a larger format

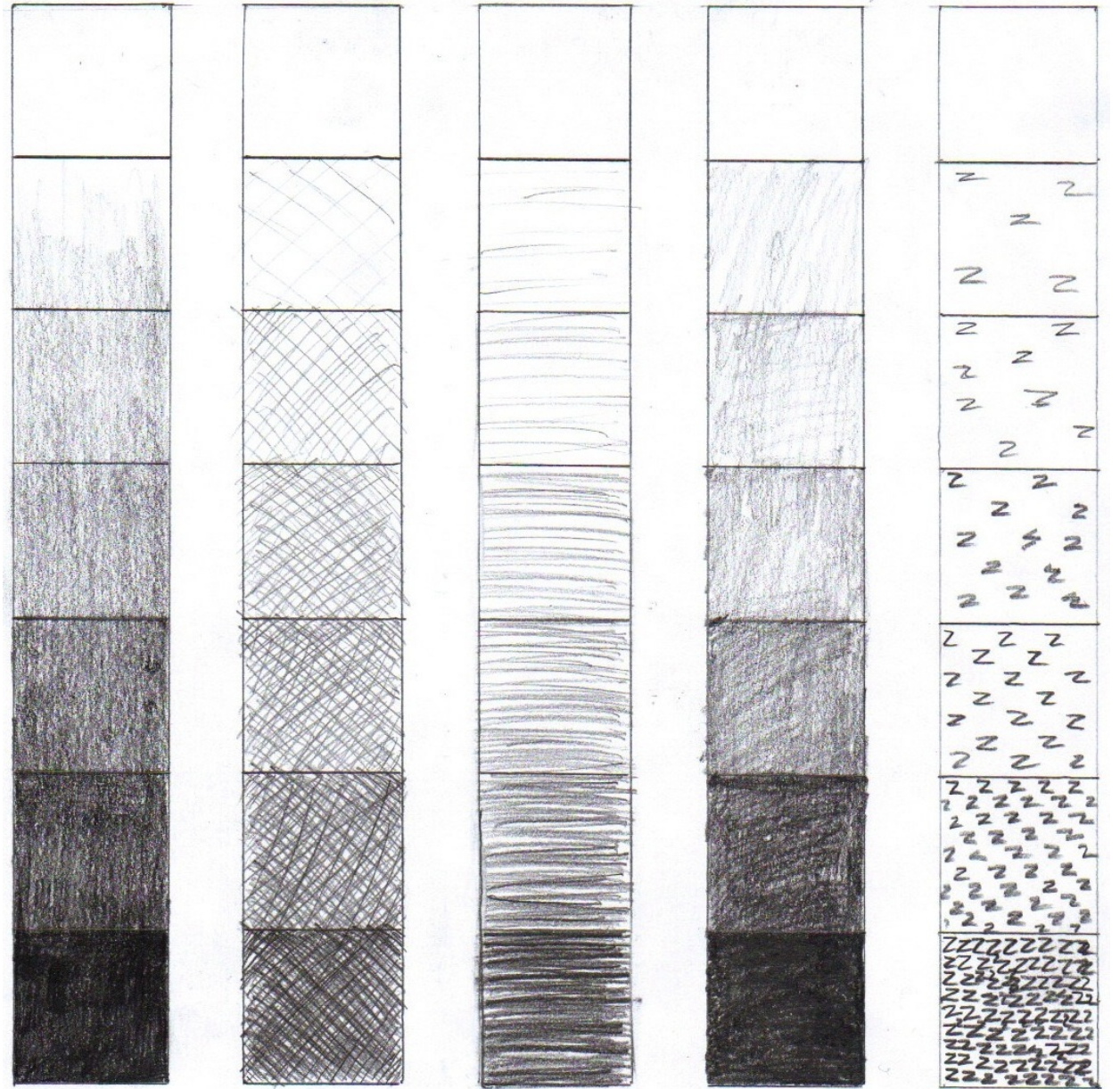
- New Compositions will scale up to approximated 11 x 14 inches
- New Drawing will be centered in the middle of an 18 x 24 in piece of paper
- Tape off border with masking tape
- Use the Geometric iGrid, Scaling method explained



Materials

- Large Paper
- Ruler
- Pencils
- Erasers
- Ink pens (optional)
- Tape

Your textural value scales



MORE
INSPIRATION



Julie Mehretu

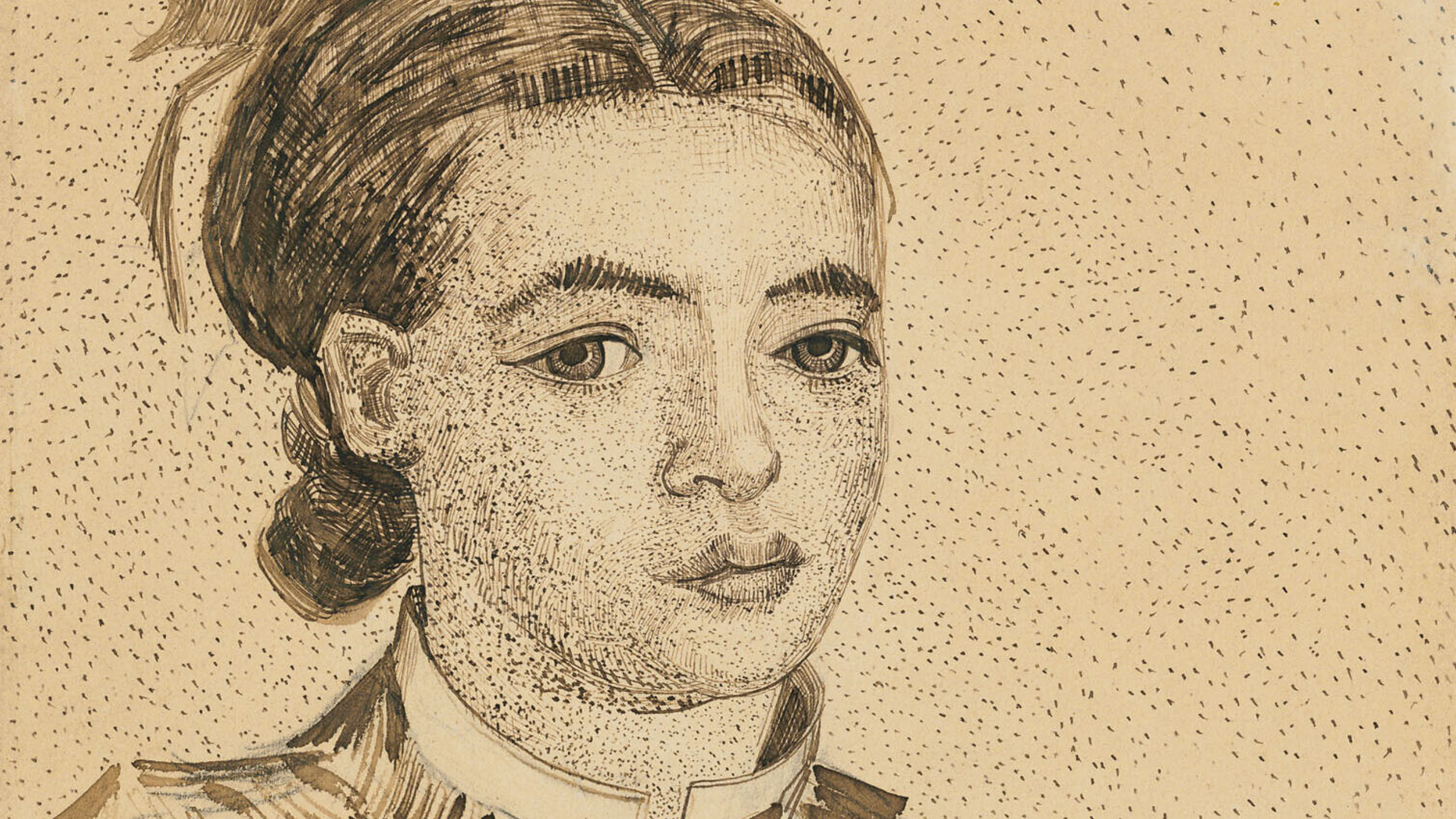






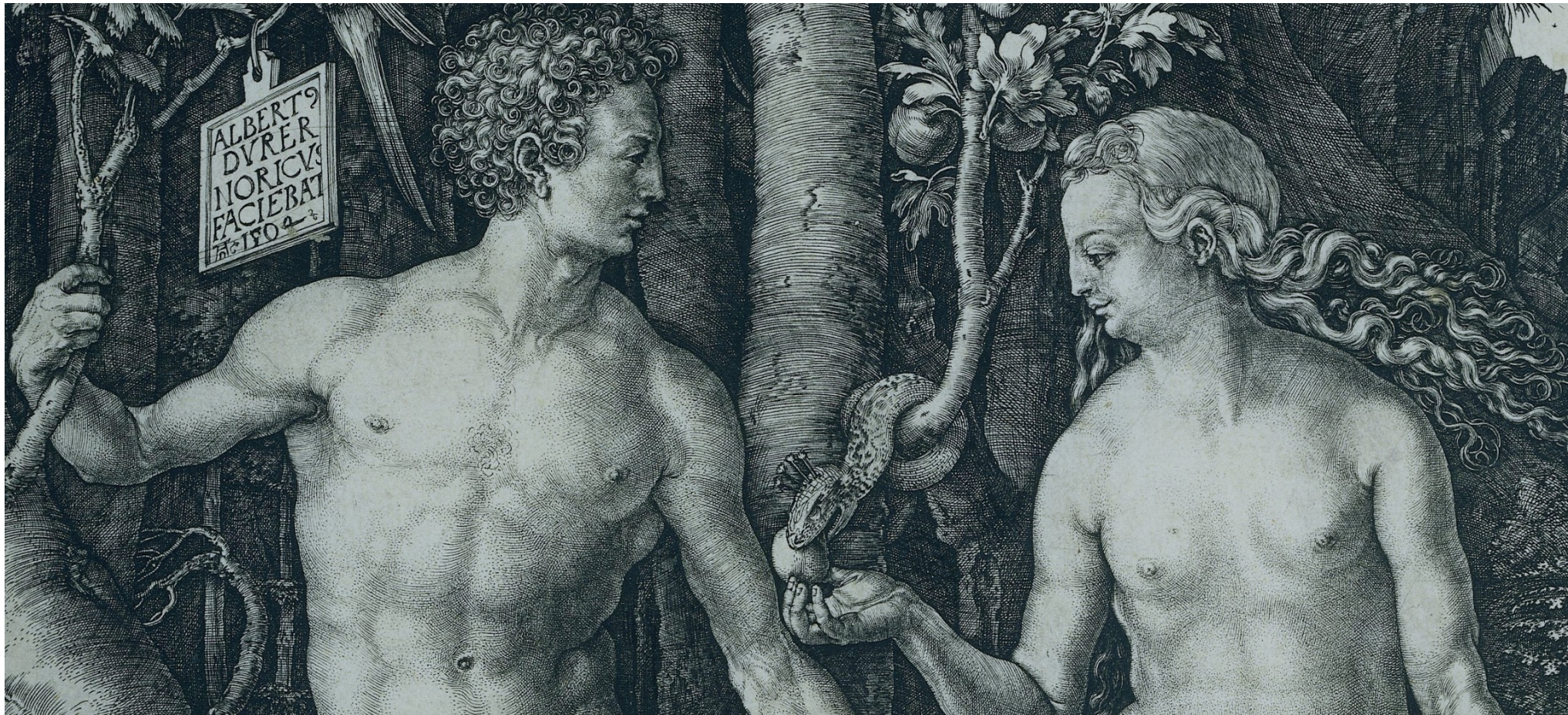
Vincent Vangogh







Albrecht Durer



Notice how hatching shows form.





Original to Textural

Have FUN!

